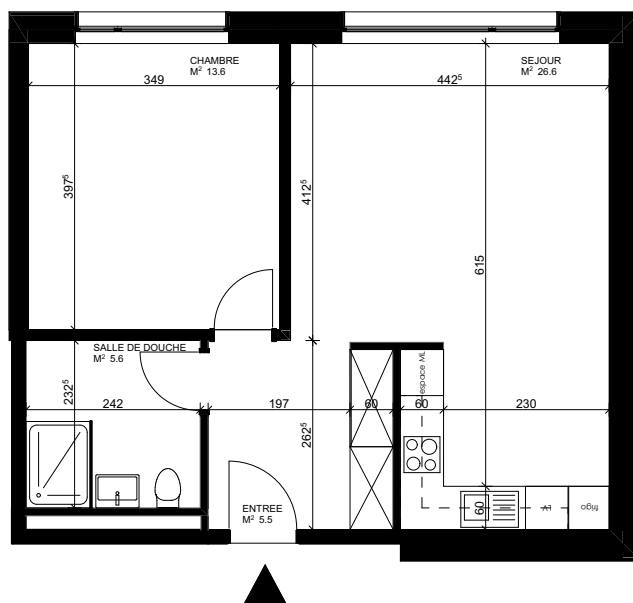


Les Terrasses du Rhône

Contactez-nous

PMB Gérance Sàrl
+41 27 723 51 91
info@pmbgerance.ch
www.pmbgerance.ch



Appartement C-14

Avenue Tourbillon 88
1950 Sion

| | |
|------------------|-----------------------|
| Niveau | +1 |
| Bâtiment | C |
| Typologie | 2.5 pièces |
| Surface locative | ~ 51 m ² |
| Surface terrasse | - |
| Surface cave | ~ 10.6 m ² |
| Sans obstacles | OUI |

| | |
|--------------------|-------------|
| Loyer net | CHF 1'040.- |
| Acompte de charges | CHF 135.- |
| Loyer brut | CHF 1'175.- |

